



GAS RATIO LOG

WELL : LONGTOM-3



FROM (m): 1000 TO (m): 3290 SCALE: 1/ 500

GENERAL DATA

Client : NEXUS ENERGY
 Country : AUSTRALIA
 Permit : VIC/P54
 Basin : GIPPSLAND
 Well Type : APPRAISAL
 Rig Name : OCEAN PATRIOT

LOCATION DATA

Latitude : 38°05'34.774"S
 Longitude : 148°18'41.479"E
 RT - MSL (m): 21.5
 Water Depth (m): 56.7

CASING

762mm (30") Shoe: 110.8m
 340mm (13 3/8") Shoe: 995.3m

FINAL WELL DATA

Total Depth (mMDRT): m
 TVD SS (m): m
 Date Well Spudded : 11-07-2006
 Date TD Reached : XX-09-2006
 Final Status : ?

GAS RATIOS FORMULAE

GAS WETNESS RATIO (Wh)
 $GWR = (C2 + C3 + C4 + C5) / (C1 + C2 + C3 + C4 + C5) * 100$

LIGHT TO HEAVY RATIO (Bh)
 $LHR = (C1 + C2) / (C3 + C4 + C5)$

OIL CHARACTER QUALIFIER (Ch)
 $OCQ = (C4 + C5) / (C3)$

LITHOLOGY LEGEND

- | | | | | | |
|--|-----------------|--|-----------------|--|----------------|
| | Claystone | | Limestone | | Sponges |
| | Siltstone | | Dolomite | | Brachiopoda |
| | Shale | | Coal | | Cement |
| | Fine SST | | Arg. SST | | Glauconite |
| | Medium SST | | Lithic Fragment | | Pyrite |
| | Coarse SST | | Foraminifera | | Iron Minerals |
| | Marl | | Fossils | | Mica |
| | Clay, Limestone | | Bryozoa | | Carb Fragments |

1 unit = 200 ppm methane equivalent in air

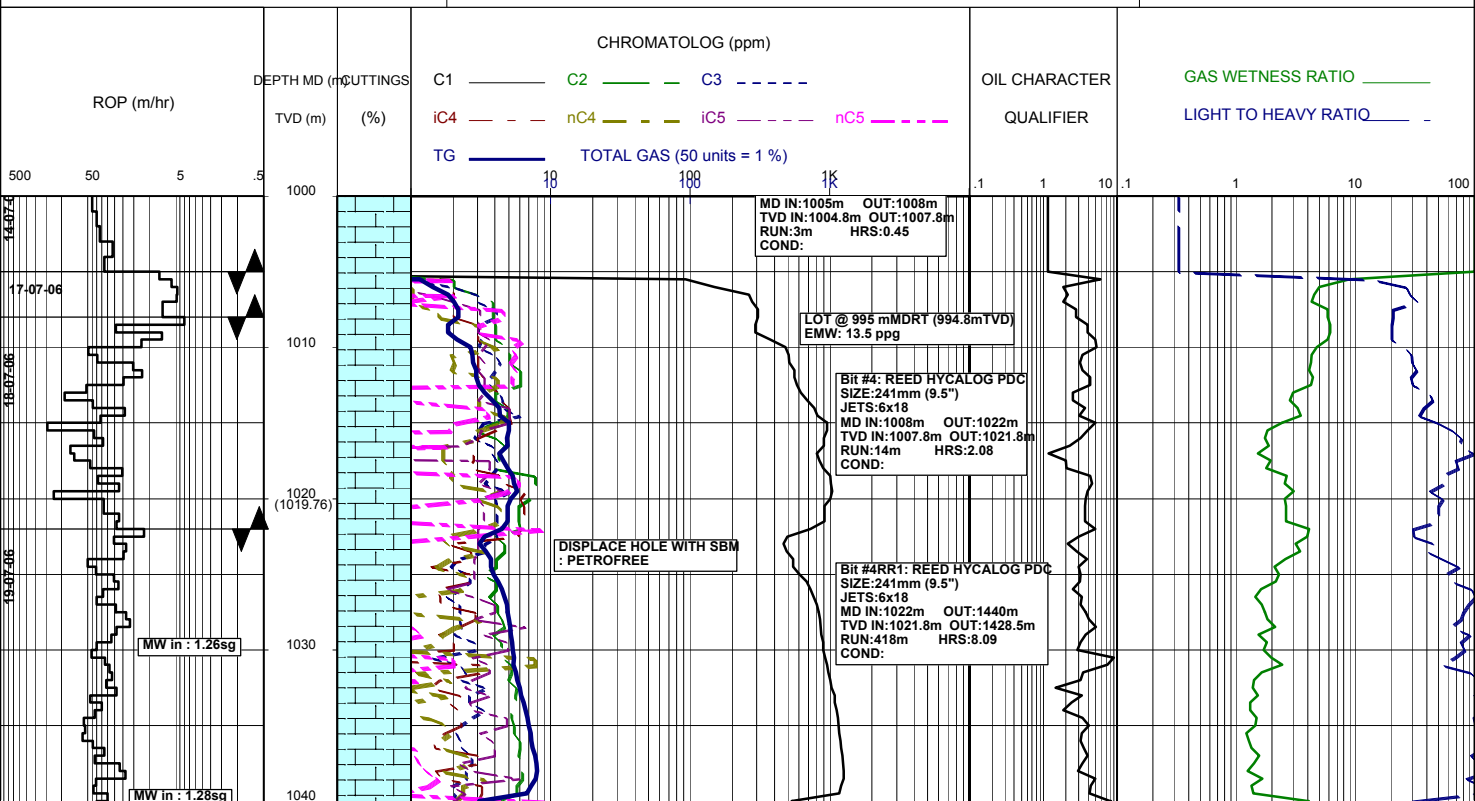
GEOSERVICES CREW

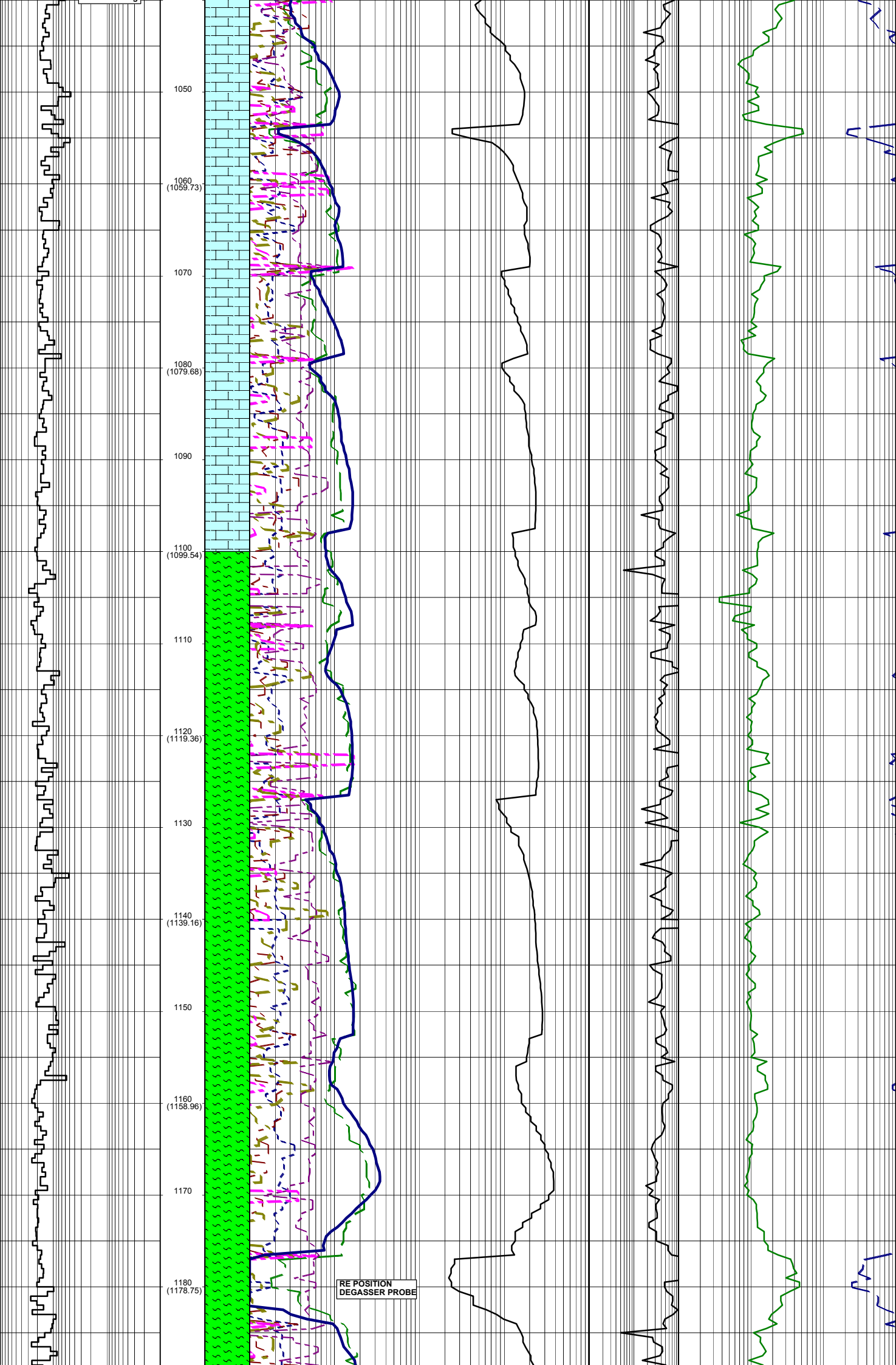
ALS ENGINEERS

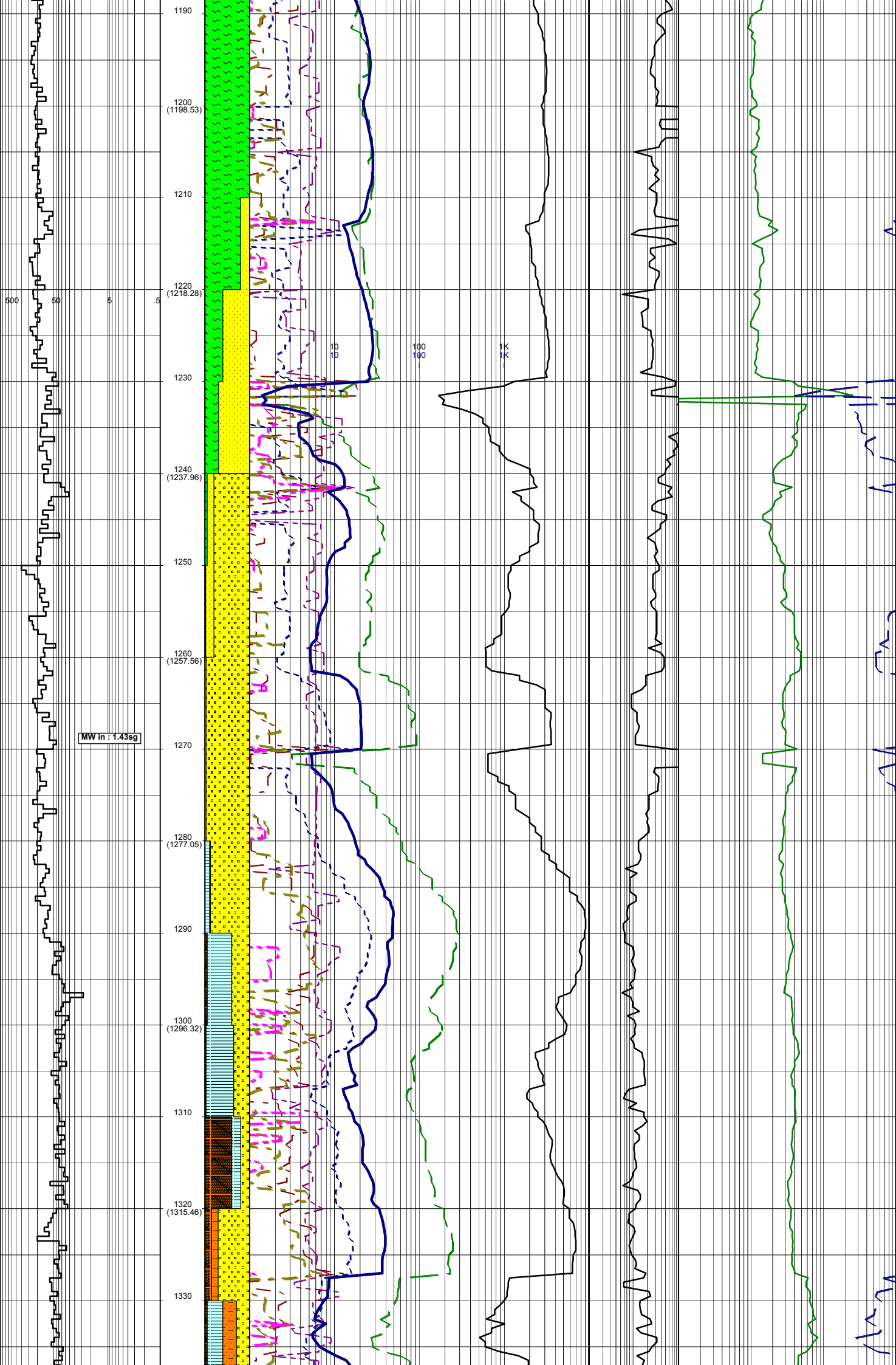
T. N. KYAW
 F. MAKHAD
 A. DUNN
 D. ADDERLEY

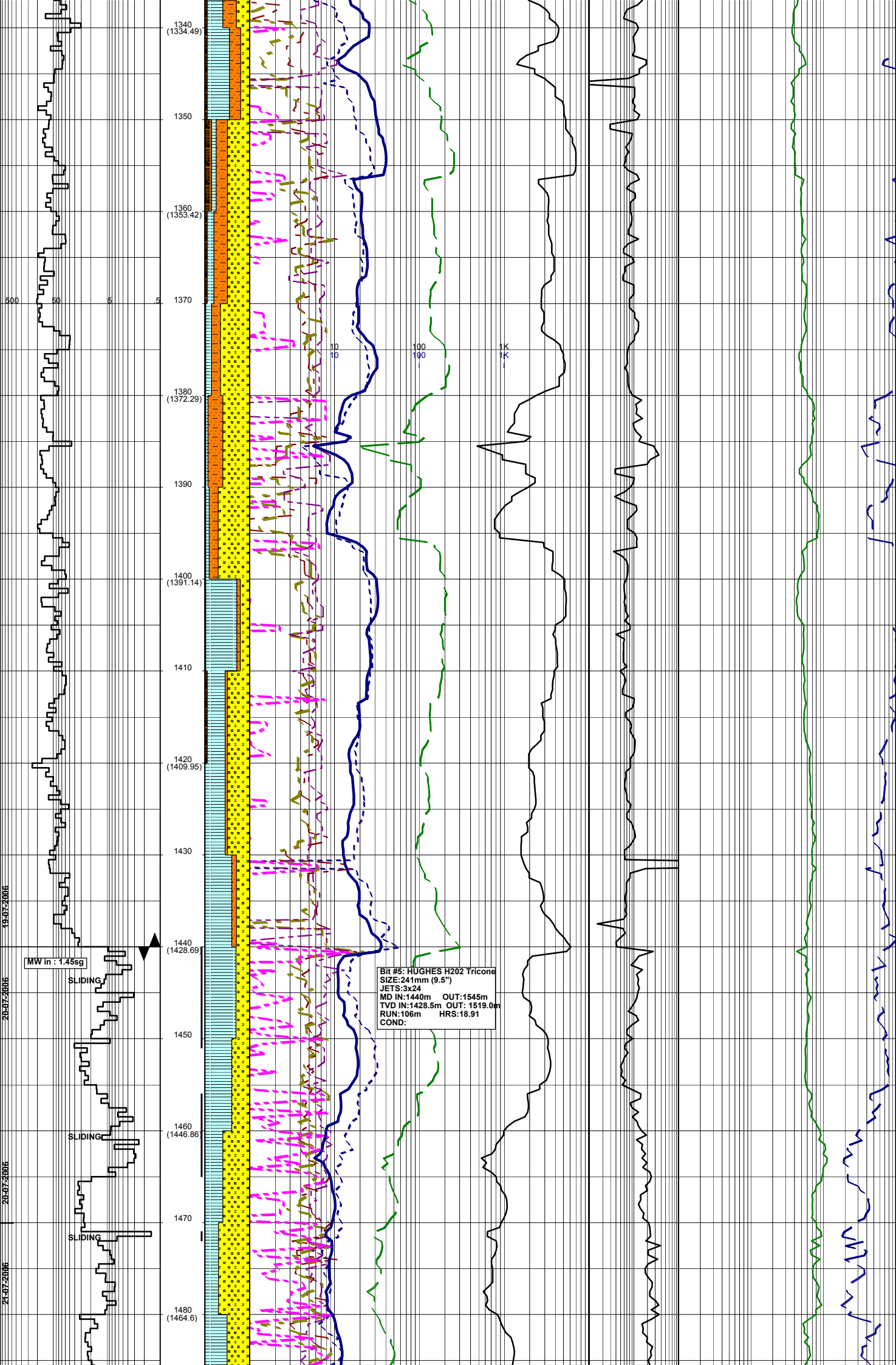
MUDLOGGERS

178mm(7")









1340 (1334.49)
 1350
 1360 (1353.42)
 1370
 1390 (1372.29)
 1390
 1400 (1391.14)
 1410
 1420 (1409.95)
 1430
 1440 (1428.69)
 1450
 1460 (1446.86)
 1470
 1480 (1464.6)

Bit #5: HUGHES H202 Tricone
 SIZE:241mm (9.5")
 JETS:3x24
 MD IN:1440m OUT:1545m
 TVD IN:1428.5m OUT: 1519.0m
 RUN:106m HRS:18.91
 COND:

MW in : 1.45sg

SLIDING

SLIDING

SLIDING

500

80

5

5

19-07-2006

20-07-2006

20-07-2006

20-07-2006

21-07-2006

21-07-2006

21-07-2006

21-07-2006

21-07-2006

21-07-2006

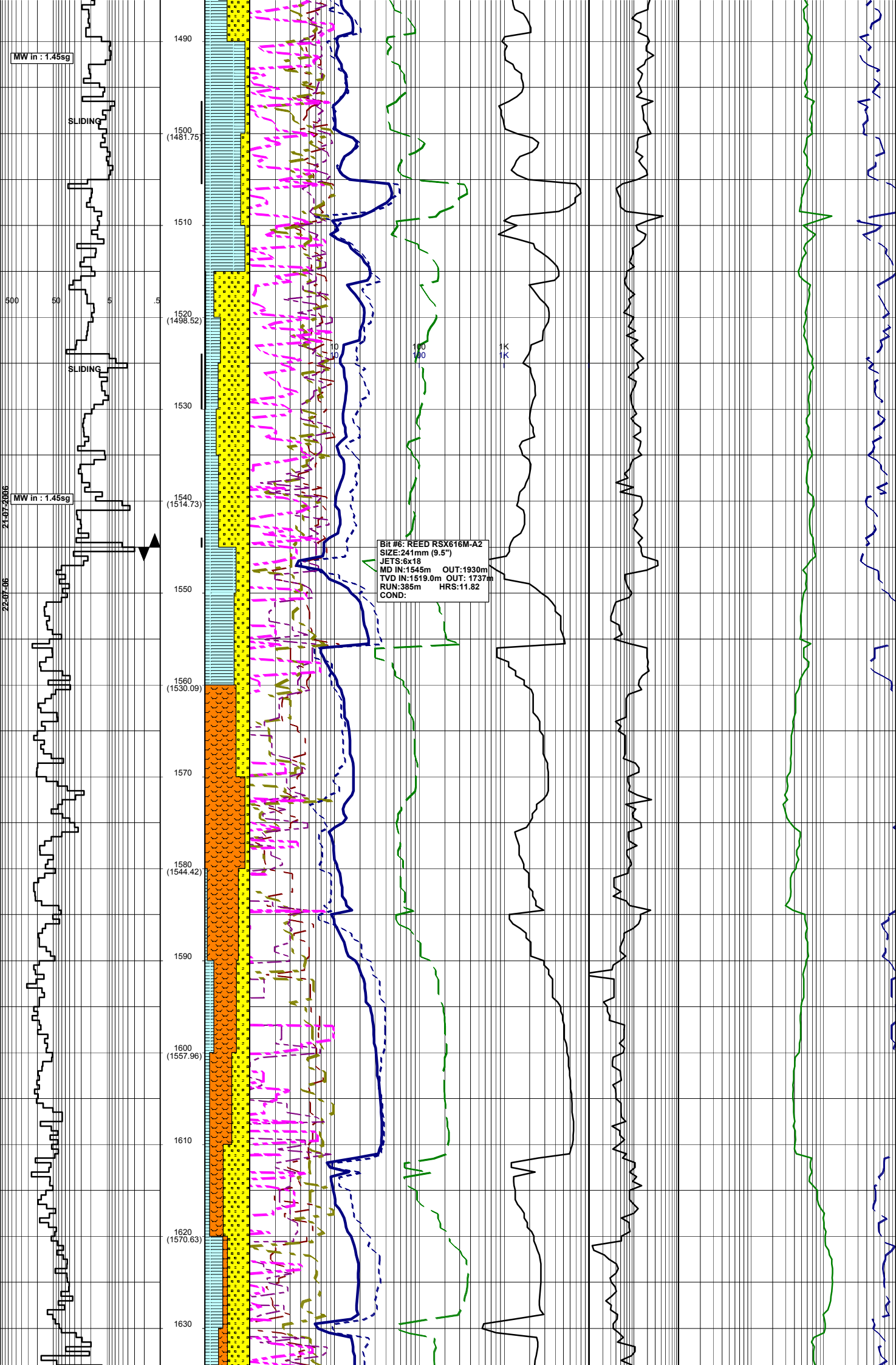
21-07-2006

21-07-2006

21-07-2006

21-07-2006

21-07-2006



MW in : 1.45sg

SLIDING

1490

1500
(1481.75)

1510

1520
(1498.52)

1530

1540
(1514.73)

1550

1560
(1530.09)

1570

1580
(1544.42)

1590

1600
(1557.96)

1610

1620
(1570.63)

1630

Bit #6: REED RSX616M-A2
SIZE:241mm (9.5")
JETS:6x18
MD IN:1545m OUT:1930m
TVD IN:1519.0m OUT: 1737m
RUN:385m HRS:11.82
COND:

500

50

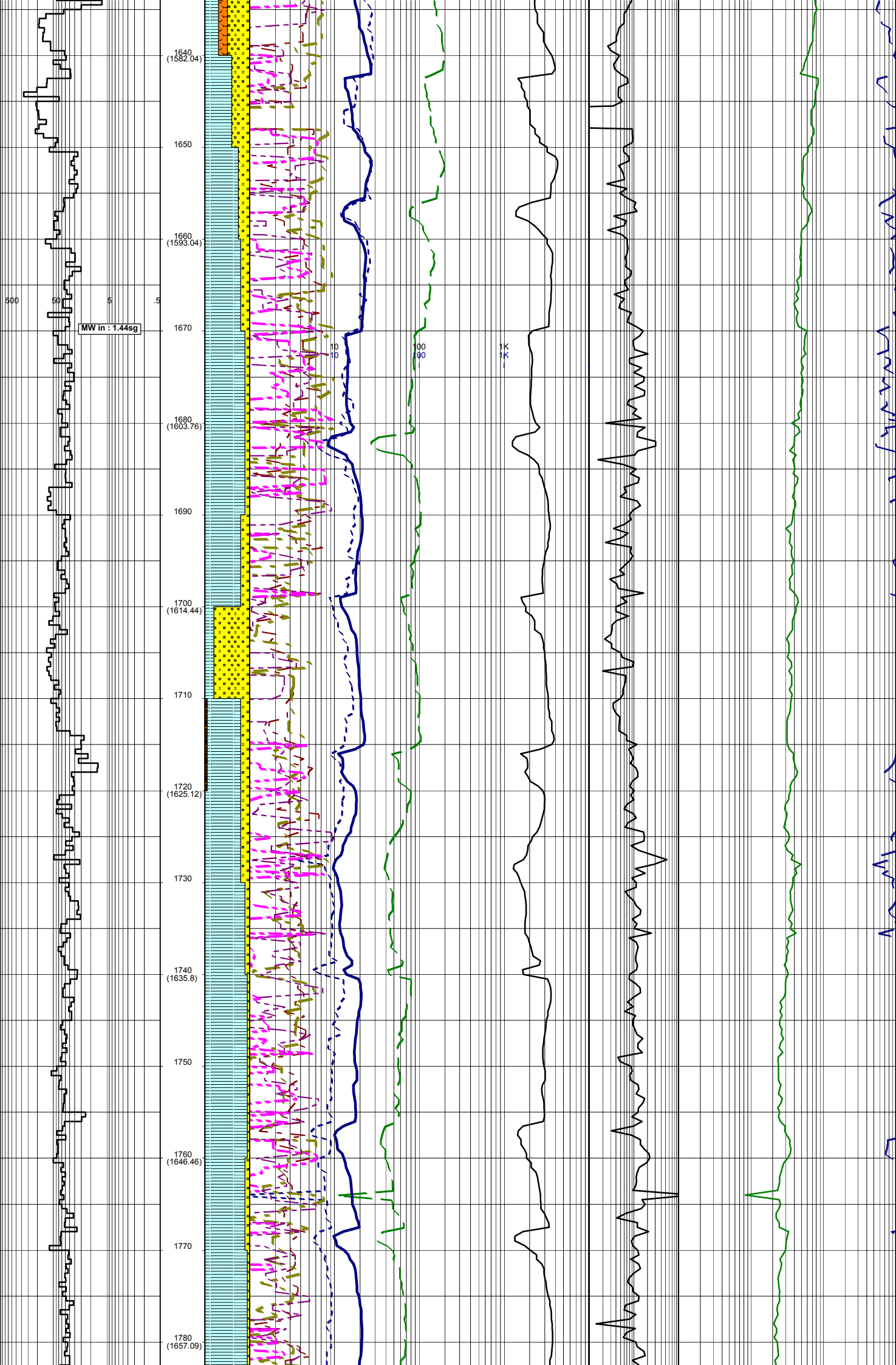
5

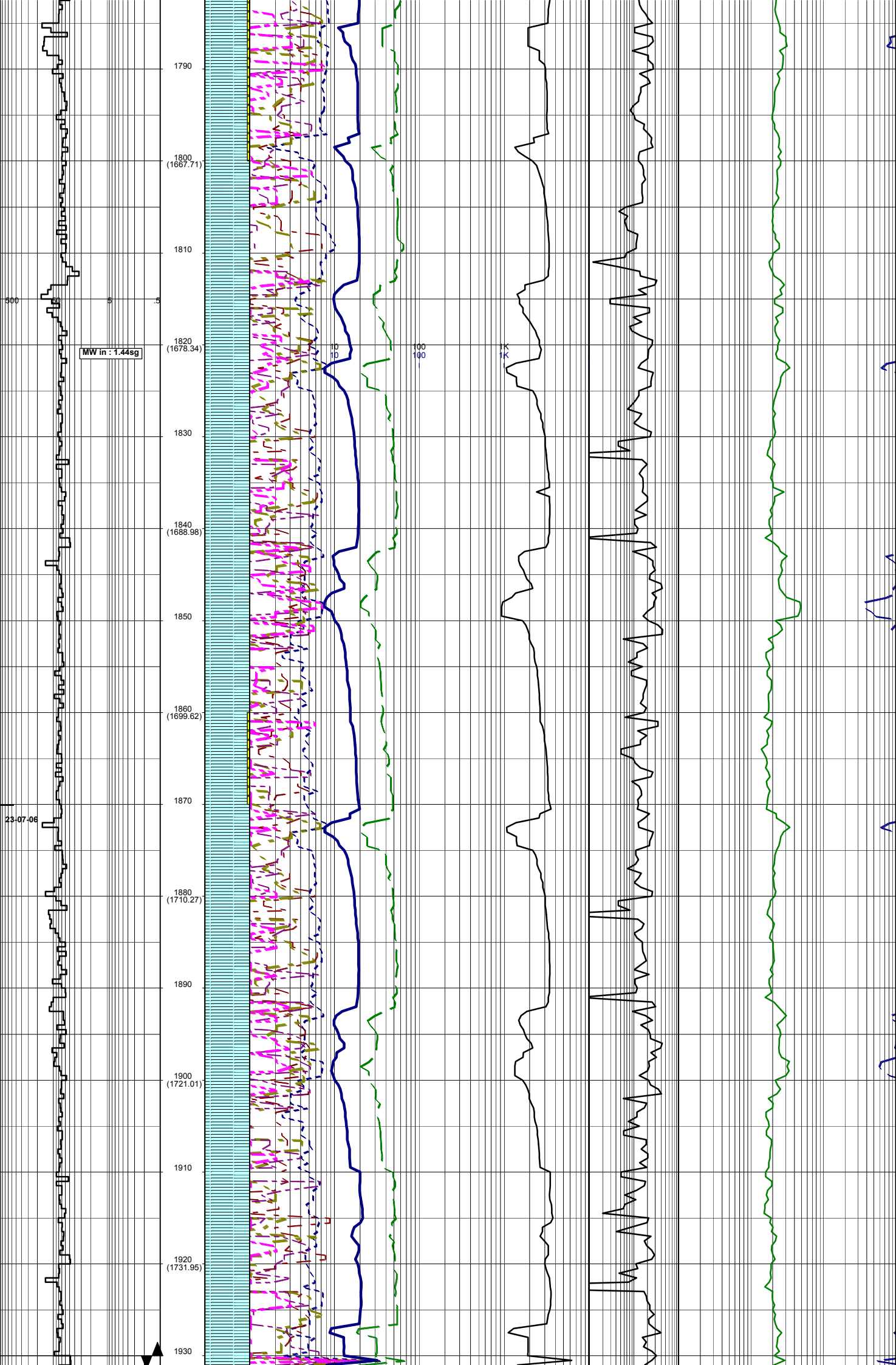
.5

MW in : 1.45sg

21.07-2006

22.07-06





MW in: 1.44sg

Bit #: SMITH M716PXC
SIZE: 241mm (9.5")
JETS: 5x18 & 2x16
MD IN: 1930m OUT: m
TVD IN: m OUT: m
RUN: m HRS: m
COND:

1940 (1743.09)
1950
1960 (1754.45)
1970
1980 (1766.05)
1990
2000 (1777.73)
2010
2020 (1789.44)
2030
2040 (1800.9)
2050
2060 (1812.08)
2070
2080

